

2001 BOMBARDIER GLOBAL EXPRESS SERIAL NUMBER: 9060



(HQ) Raleigh +1 919-941-8400 | info@jetcraft.com | www.jetcraft.com

Basel, CH ----- +41 58 158 4958 | Hong Kong ----- +852 2868 6807 | Moscow, Russia --- +7 495 648 28 69 | Teterboro, NJ ---- +1 201 288 1800
Dubai, UAE ----- +971 4 324 3327 | Mpls, MN ----- +1 612 238 3870 | St. Louis, MO ----- +1 314 409 4791

JETCRAFT
CORPORATION

2001 BOMBARDIER GLOBAL EXPRESS

SERIAL NUMBER: 9060

AIRFRAME

4,650 Hours
1,843 Landings
RVSM Compliant

Entry Into Service Date – November 2001
Recently Refurbished Interior

ENGINES

	Left	Right
Description	Rolls-Royce Tay Mk 611-8C	
Serial Number	12227	12232
Hours Since New	4,650	4,650
Cycles Since New	1,843	1,843
Coverage	On Condition	

APU

Model	Allied Signal RE220 (GX) Auxiliary Power Unit
Serial Number	P-164
Hours	2,734
Coverage	TBD

AVIONICS

This Global Express is well equipped with a fully integrated Honeywell Primus 2000XP 6-Tube EFIS avionics suite generally summarized as follows:

- Six 8"x 7" DU-870 Color EFIS displays, 2 PFD / 2 EICAS / 2 MFD
- Dual integrated Flight Management Systems (FMS) with dual Global Positioning Systems (GPS)
- Triple HG-2001 inertial reference systems
- Triple AZ-840 Micro Air Data Computers (MADC)
- Autothrottle system
- Full Authority Digital Engine Control System (FADEC)
- Engine Indication/Crew Alerting System (EICAS)
- Honeywell autopilot
- Primus 880 color weather radar
- Honeywell MCS6000 SATCOM system
- Allied signal mark V EGPWS
- Flight data recorder
- Triple IC 800 Integrated Avionics Computers (IAC)
- Dual Honeywell RCZ-833K integrated COM/ident radios with enhanced mode 'S' diversity transponders
- Dual Honeywell RNZ-851 integrated NAV radios with VOR/ILS/MKR/ADF/DME (FM immunity)
- TCAS II traffic alert and collision avoidance system with change 7
- Dual Primus II (RM-855) radio management units
- Dual Collins ALT-4000 radio altimeters
- Dual Collins HF-9000 HF comm system
- Coltech CSD-714 SELCAL system
- Central Aircraft Information Maintenance System (CAIMS)
- Cockpit voice recorder
- Artex 406hz ELT

Specifications are subject to verification by purchaser. Aircraft is subject to prior sale, and/or removal from the market without prior notice.

AVIONICS OPTIONS

- CMC electronics CT-1000 EFB's
- 3rd VHF comm RCZ-833 (8.33 MHz)
- Lighting sensor system (SB-700-34-003)

CABIN ENTERTAINMENT AND ADDITIONAL FEATURES

- Office in the sky option: (SB 700-23-003)
- MagnaStar C-2000 airborne telephone system with 5 handsets
- Airborne teledyne datalink (S/B 700-23-005)
- 2 CD/DVD players, single video cassette player
- 2 18" LCD displays
- Securoplane systems tail camera and lower fuselage quad camera
- Airshow genesys
- Humidification system
- Jumpseat
- First aid kit
- Printer/fax machine
- 115 V 60hz power outlets throughout
- 8 6.5" plug-in monitor locations throughout
- 4 6.5" monitors

INTERIOR

Recently Refurbished. This Global Express features a fireblocked 14 passenger forward galley configuration consisting of the following:

- Forward crew rest area with 2 seats plus 1 jumpseat.
- Forward 4 place club with foldout tables
- Mid cabin 3 place divan (not for take-off and landing) opposite of a 2 place club with fold out tables
- Cockpit flight observer seat (jumpseat)
- Forward crew lavatory
- Bulkhead which separates the mid cabin and aft cabin and houses a computer, printer/fax, entertainment equipment and a low-desk.
- Aft cabin 4 place dining group with hi-Low table opposite of a 2 place club with fold out tables
- Aft lavatory with wardrobe and aft baggage access

EXTERIOR

Recent paint! Overall matterhorn white, personalization is quick and easy.

GALLEY FEATURES

- Hi-temp oven
- Microwave oven
- Coffee maker
- Air chiller
- China/crystal storage
- Wine bottle/can storage

WEIGHTS

Gross weight (ramp): 98,250 lbs
Max take off weight: 98,000 lbs
Max landing weight: 78,600 lbs
Last weighed: TBD

(HQ) Raleigh +1 919-941-8400 info@jetcraft.com www.jetcraft.com

Basel, CH ----- +41 58 158 4958 | Hong Kong ----- +852 2868 6807 | Moscow, Russia --- +7 495 648 28 69 | Teterboro, NJ ---- +1 201 288 1800
Dubai, UAE ----- +971 4 324 3327 | Mpls, MN ----- +1 612 238 3870 | St. Louis, MO ----- +1 314 409 4791

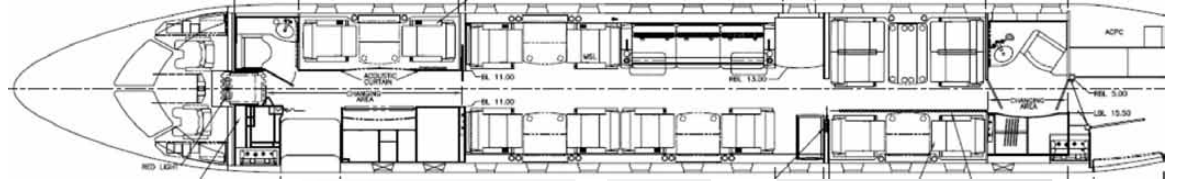
JETCRAFT
CORPORATION

2001 BOMBARDIER GLOBAL EXPRESS SERIAL NUMBER: 9060

Seating Detail



Cabin Layout



Divan



Aft Cabin

Specifications are subject to verification by purchaser. Aircraft is subject to prior sale, and/or removal from the market without prior notice.

(HQ) Raleigh +1 919-941-8400 info@jetcraft.com www.jetcraft.com

Basel, CH ----- +41 58 158 4958 | Hong Kong ----- +852 2868 6807 | Moscow, Russia --- +7 495 648 28 69 | Teterboro, NJ ---- +1 201 288 1800
Dubai, UAE ----- +971 4 324 3327 | Mpls, MN ----- +1 612 238 3870 | St. Louis, MO ----- +1 314 409 4791

JETCRAFT
CORPORATION

2001 BOMBARDIER GLOBAL EXPRESS SERIAL NUMBER: 9060

Forward Cabin Facing Aft



Specifications are subject to verification by purchaser. Aircraft is subject to prior sale, and/or removal from the market without prior notice.

(HQ) Raleigh +1 919-941-8400 info@jetcraft.com www.jetcraft.com

Basel, CH ----- +41 58 158 4958 | Hong Kong ----- +852 2868 6807 | Moscow, Russia --- +7 495 648 28 69 | Teterboro, NJ ---- +1 201 288 1800
Dubai, UAE ----- +971 4 324 3327 | Mpls, MN ----- +1 612 238 3870 | St. Louis, MO ----- +1 314 409 4791

JETCRAFT
CORPORATION

2001 BOMBARDIER GLOBAL EXPRESS SERIAL NUMBER: 9060

Aft Cabin Facing Forward



Specifications are subject to verification by purchaser. Aircraft is subject to prior sale, and/or removal from the market without prior notice.

(HQ) Raleigh +1 919-941-8400 | info@jetcraft.com | www.jetcraft.com

Basel, CH ----- +41 58 158 4958 | Hong Kong ----- +852 2868 6807 | Moscow, Russia --- +7 495 648 28 69 | Teterboro, NJ ---- +1 201 288 1800
Dubai, UAE ----- +971 4 324 3327 | Mpls, MN ----- +1 612 238 3870 | St. Louis, MO ----- +1 314 409 4791

JETCRAFT
CORPORATION

2001 BOMBARDIER GLOBAL EXPRESS

SERIAL NUMBER: 9060

Forward Lavatory



Forward Galley



Espresso Machine

Specifications are subject to verification by purchaser. Aircraft is subject to prior sale, and/or removal from the market without prior notice.

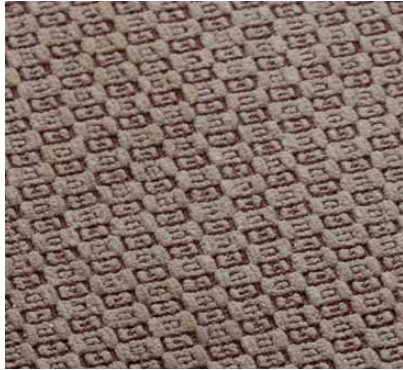
(HQ) Raleigh +1 919-941-8400 | info@jetcraft.com | www.jetcraft.com

Basel, CH ----- +41 58 158 4958 | Hong Kong ----- +852 2868 6807 | Moscow, Russia --- +7 495 648 28 69 | Teterboro, NJ ---- +1 201 288 1800
Dubai, UAE ----- +971 4 324 3327 | Mpls, MN ----- +1 612 238 3870 | St. Louis, MO ----- +1 314 409 4791

JETCRAFT
CORPORATION

2001 BOMBARDIER GLOBAL EXPRESS SERIAL NUMBER: 9060

Divan Fabric Detail



CD/DVD Player



Carpet Detail



Seat Controls



Divan Detail

Specifications are subject to verification by purchaser. Aircraft is subject to prior sale, and/or removal from the market without prior notice.

(HQ) Raleigh +1 919-941-8400 | info@jetcraft.com | www.jetcraft.com

Basel, CH ----- +41 58 158 4958 | Hong Kong ----- +852 2868 6807 | Moscow, Russia --- +7 495 648 28 69 | Teterboro, NJ ---- +1 201 288 1800
Dubai, UAE ----- +971 4 324 3327 | Mpls, MN ----- +1 612 238 3870 | St. Louis, MO ----- +1 314 409 4791

JETCRAFT
CORPORATION

2001 BOMBARDIER GLOBAL EXPRESS SERIAL NUMBER: 9060

Avionics Suite



Specifications are subject to verification by purchaser. Aircraft is subject to prior sale, and/or removal from the market without prior notice.

(HQ) Raleigh +1 919-941-8400 info@jetcraft.com www.jetcraft.com

Basel, CH ----- +41 58 158 4958 | Hong Kong ----- +852 2868 6807 | Moscow, Russia --- +7 495 648 28 69 | Teterboro, NJ ---- +1 201 288 1800
Dubai, UAE ----- +971 4 324 3327 | Mpls, MN ----- +1 612 238 3870 | St. Louis, MO ----- +1 314 409 4791

JETCRAFT
CORPORATION

2001 BOMBARDIER GLOBAL EXPRESS

SERIAL NUMBER: 9060



Exterior Details



Specifications are subject to verification by purchaser. Aircraft is subject to prior sale, and/or removal from the market without prior notice.

(HQ) Raleigh +1 919-941-8400 | info@jetcraft.com | www.jetcraft.com

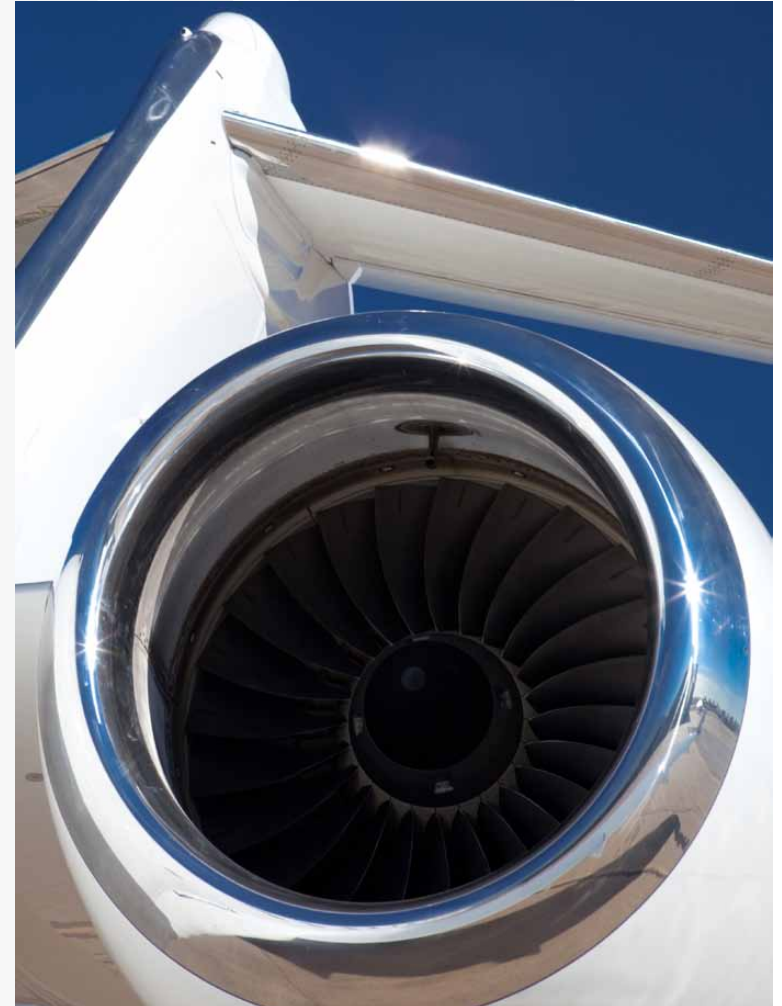
Basel, CH ----- +41 58 158 4958 | Hong Kong ----- +852 2868 6807 | Moscow, Russia --- +7 495 648 28 69 | Teterboro, NJ ---- +1 201 288 1800
Dubai, UAE ----- +971 4 324 3327 | Mpls, MN ----- +1 612 238 3870 | St. Louis, MO ----- +1 314 409 4791

JETCRAFT
CORPORATION

2001 BOMBARDIER GLOBAL EXPRESS

SERIAL NUMBER: 9060

Exterior Details



Specifications are subject to verification by purchaser. Aircraft is subject to prior sale, and/or removal from the market without prior notice.

(HQ) Raleigh +1 919-941-8400 info@jetcraft.com www.jetcraft.com

Basel, CH ----- +41 58 158 4958 | Hong Kong ----- +852 2868 6807 | Moscow, Russia --- +7 495 648 28 69 | Teterboro, NJ ---- +1 201 288 1800
Dubai, UAE ----- +971 4 324 3327 | Mpls, MN ----- +1 612 238 3870 | St. Louis, MO ----- +1 314 409 4791

JETCRAFT
CORPORATION

AIRCRAFT ACQUISITIONS, SALES AND TRADES

AIRBUS BOEING BOMBARDIER CESSNA DASSAULT EMBRAER GULFSTREAM HAWKER LEARJET

Whether you're looking to buy an aircraft or sell one, Jetcraft will put five decades of experience to work making it happen. Flawlessly. Because when you turn to us, you're tapping into an international team of specialists that consistently transform complex challenges into solutions. We build our entire approach around you, leveraging our market expertise and extensive industry partnerships to guarantee you'll always get the best advice — and the best deals. So give us a call. And leave doubt on the tarmac.



(HQ) Raleigh +1 919-941-8400 info@jetcraft.com www.jetcraft.com

Basel, CH ----- +41 58 158 4958 | Hong Kong ----- +852 2868 6807 | Moscow, Russia --- +7 495 648 28 69 | Teterboro, NJ ----- +1 201 288 1800
Dubai, UAE ----- + 971 4 324 3327 | Mpls, MN ----- +1 612 238 3870 | St. Louis, MO ----- +1 314 409 4791

JETCRAFT
CORPORATION