

2007 GULFSTREAM G450 SERIAL NUMBER: 4088



(HQ) Raleigh +1 919-941-8400 info@jetcraft.com www.jetcraft.com

Basel, CH ----- +41 58 158 4958
Dubai, UAE ----- + 971 4 324 3327

Hong Kong ----- +852 2868 6807
Mpls, MN ----- +1 612 238 3870

Moscow, Russia --- +7 495 648 28 69
St. Louis, MO ----- +1 314 409 4791

Teterboro, NJ ----- +1 201 288 1800

JETCRAFT
CORPORATION

2007 GULFSTREAM G450 SERIAL NUMBER: 4088

AIRFRAME

718.3 Hours *as of Dec 16th 2011* Entry to Service – October 5, 2007
287 Landings Certificate of Airworthiness Date – July 18, 2007

ENGINES

Left & Right

Description	Rolls-Royce Tay Mk 611-8C
Hours Since New	718.3
Midlife/TBO	6000/12,000 hours
Thrust	13,850 lb

APU

Description	Honeywell GTCP36-150
Hours Since New	766

AVIONICS

The G450 is equipped with Gulfstream's exclusive PlaneView™ cockpit featuring the same technologically advanced avionics package developed for the G550. A general summary of this aircraft's next generation, Honeywell Primus Epic avionics suite is as follows:

- PlaneView™ avionics suite
- Honeywell head up display / visual guidance system
- Enhanced vision system (EVS)
- TCAS 2000 collision avoidance system
- ACARS with satellite communication link and cockpit printer
- Passenger address system
- MagnaStar radiotelephone system with 5 handsets (includes 1 cockpit handset)
- VHF navigation systems
- Parameter digital flight data recorder
- Four multi-function 14" flat panel LCD avionics displays
- Two side-mounted cursor control devices
- SecuraPlane 500 security system
- Honeywell MCS-7000 satellite communications (SATCOM) system
- Dual 24-channel global positioning system
- Enhanced GPWS with windshear detection
- SecuraPlane 500 security system
- VHF communication systems
- Honeywell LSZ-860 lightning detection system

ADDITIONAL HIGHLIGHTS/OPTIONS

- Dual zone cabin temperature control
- Common keyed locks
- Precise Flight Pulselite system
- Lockable fuel caps
- Wing tip taxi lights
- Enhanced sound proofing
- Recliner footrests on forward facing single seats
- Maintenance storage box
- 30 gallon pressurized water system
- Passenger emergency oxygen system
- Life vests and rafts (rafts JAR Ops 1 compliant with 3-frequency ELTs)
- Manuals on CD
- Manual lumbar on #2 left hand and right hand single seats

EXTERIOR

Overall White with Handsome Red and Silver Accent Stripes

INTERIOR

Gulfstream completion. This G450 features the Universal Aft Galley configuration further described as follows:

Passenger Cabin

- Gulfstream Interior Periphery:
 - Headliner
 - Electric window shades
 - Decorative continuous window overlays
 - Passenger service units:
 - L.E.D. reading and table lights
 - Swivel air outlets
 - Passenger emergency oxygen
 - Audio system speakers
 - L.E.D. indirect cabin lighting

Forward Entryway Area

- Entryway acoustical door
- Cockpit privacy door
- Crew refreshment compartment
- Crew lavatory with vacuum toilet
- Manual storage cabinet

Seating

- Six (6) berthable single seats with recliner footrests
- Four-place conference grouping
- Four-place berthable divan

Tables, Credenzas, and Misc. Storage

- 43" x 31" conference table at four-place grouping
- 25" x 23" console table between each two-place grouping
- Credenza across from conference grouping incorporating the cabin entertainment equipment, facsimile machine and
- Miscellaneous storage
- Magazine storage on forward and aft cabin bulkheads

Specifications are subject to verification by purchaser. Aircraft is subject to prior sale, and/or removal from the market without prior notice.

(HQ) Raleigh +1 919-941-8400 info@jetcraft.com www.jetcraft.com

Basel, CH ----- +41 58 158 4958 Hong Kong ----- +852 2868 6807 Moscow, Russia --- +7 495 648 28 69 Teterboro, NJ ---- +1 201 288 1800
Dubai, UAE ----- +971 4 324 3327 Mpls, MN ----- +1 612 238 3870 St. Louis, MO ----- +1 314 409 4791

JETCRAFT
CORPORATION

2007 GULFSTREAM G450 SERIAL NUMBER: 4088

Aft Galley

- Complete hot/cold meal and beverage service
- High-temperature oven
- Microwave oven
- Large ice drawers
- Cold food storage with gasper cooling
- Solid surface countertops
- Aerolux espresso maker
- Customs sealed wine and liquor storage
- Large sink with hot and cold water faucet
- Gulfstream supplied china and cutlery, including fitted storage
- Gulfstream supplied crystal displayed in lighted compartments
- Storage for snacks, beverages, and other supplies
- Large waste container
- Water sterilization system

Aft Lavatory Area

- 2 floor-to-ceiling closets (both with adjustable shelves) for garment/miscellaneous storage
- Vanity with sink incorporating hot and cold water faucet
- Solid surface countertop
- Vacuum toilet
- Storage for toiletries, etc.
- Waste container

Cabin Electronics

- Airshow "Type A" series controls throughout interior
- VIP controls at two seat locations
- Master control for lighting, entertainment systems and cabin temperature in the VIP switch panels and remote controls
- Audio/visual equipment:
 - Compact multi-disc CD player
 - 2 dual digital video disc players (multi-region)
 - 20" LCD monitor in forward left-hand cabin bulkhead
 - 17" LCD monitor in panel above the credenza
 - 7.0" monitors at each single seat
 - Secureairplane camera system with 3 cameras
 - Auxiliary audio/visual input
- Cabin audio system with individual headphone controls at each passenger seat
- Airshow 4000 passenger flight information system with worldwide maps
- Airshow wireless entertainment remote control system with 2 color touch screen remotes
- Local Area Network (LAN)
- Honeywell HD-128 high speed datasystem
- Electric utility outlet at each seat grouping
- Plain paper facsimile machine

WARRANTY

Gulfstream offers a comprehensive and fully transferable warranty generally outlined as follows:

Item	Coverage
Primary and Secondary Structures (doors, fairings, flight control surfaces, nacelles, etc.)	15 years / 15,000 hours Labor Included – Includes Corrosion or Until Oct 5, 2022
Rolls Royce Engine Material Warranty	6,000 hours or Until Oct 5, 2013
Production Non-Structural Labor & Material	Until Oct 5, 2012

Specifications are subject to verification by purchaser. Aircraft is subject to prior sale, and/or removal from the market without prior notice.

(HQ) Raleigh +1 919-941-8400 info@jetcraft.com www.jetcraft.com

Basel, CH ----- +41 58 158 4958 Hong Kong ----- +852 2868 6807 Moscow, Russia --- +7 495 648 28 69 Teterboro, NJ ---- +1 201 288 1800
Dubai, UAE ----- +971 4 324 3327 Mpls, MN ----- +1 612 238 3870 St. Louis, MO ----- +1 314 409 4791

JETCRAFT
CORPORATION

2007 GULFSTREAM G450 SERIAL NUMBER: 4088

Forward Cabin Facing Aft



Specifications are subject to verification by purchaser. Aircraft is subject to prior sale, and/or removal from the market without prior notice.

(HQ) Raleigh +1 919-941-8400 info@jetcraft.com www.jetcraft.com

Basel, CH ----- +41 58 158 4958
Dubai, UAE ----- +971 4 324 3327

Hong Kong ----- +852 2868 6807
Mpls, MN ----- +1 612 238 3870

Moscow, Russia --- +7 495 648 28 69
St. Louis, MO ----- +1 314 409 4791

Teterboro, NJ ----- +1 201 288 1800

JETCRAFT
CORPORATION

2007 GULFSTREAM G450 SERIAL NUMBER: 4088

Aft Cabin Facing Forward



Specifications are subject to verification by purchaser. Aircraft is subject to prior sale, and/or removal from the market without prior notice.

(HQ) Raleigh +1 919-941-8400 info@jetcraft.com www.jetcraft.com

Basel, CH ----- +41 58 158 4958
Dubai, UAE ----- +971 4 324 3327

Hong Kong ----- +852 2868 6807
Mpls, MN ----- +1 612 238 3870

Moscow, Russia --- +7 495 648 28 69
St. Louis, MO ----- +1 314 409 4791

Teterboro, NJ ----- +1 201 288 1800

JETCRAFT
CORPORATION

2007 GULFSTREAM G450 SERIAL NUMBER: 4088

Mid-Cabin Club Seating and Console Table



Mid-Cabin Divan

Aft Looking Forward



Specifications are subject to verification by purchaser. Aircraft is subject to prior sale, and/or removal from the market without prior notice.

(HQ) Raleigh +1 919-941-8400 info@jetcraft.com www.jetcraft.com

Basel, CH ----- +41 58 158 4958
Dubai, UAE ----- +971 4 324 3327

Hong Kong ----- +852 2868 6807
Mpls, MN ----- +1 612 238 3870

Moscow, Russia --- +7 495 648 28 69
St. Louis, MO ----- +1 314 409 4791

Teterboro, NJ ----- +1 201 288 1800

JETCRAFT
CORPORATION

2007 GULFSTREAM G450 SERIAL NUMBER: 4088

Lavatory



Mid-Cabin Looking Aft



Seat & Console Table Detail

Specifications are subject to verification by purchaser. Aircraft is subject to prior sale, and/or removal from the market without prior notice.

(HQ) Raleigh +1 919-941-8400 info@jetcraft.com www.jetcraft.com

Basel, CH ----- +41 58 158 4958
Dubai, UAE ----- +971 4 324 3327

Hong Kong ----- +852 2868 6807
Mpls, MN ----- +1 612 238 3870

Moscow, Russia --- +7 495 648 28 69
St. Louis, MO ----- +1 314 409 4791

Teterboro, NJ ----- +1 201 288 1800

JETCRAFT
CORPORATION

2007 GULFSTREAM G450 SERIAL NUMBER: 4088

Aft Cabin Facing Aft



Aft Cabin Credenza



Specifications are subject to verification by purchaser. Aircraft is subject to prior sale, and/or removal from the market without prior notice.

(HQ) Raleigh +1 919-941-8400 info@jetcraft.com www.jetcraft.com

Basel, CH ----- +41 58 158 4958
Dubai, UAE ----- +971 4 324 3327

Hong Kong ----- +852 2868 6807
Mpls, MN ----- +1 612 238 3870

Moscow, Russia --- +7 495 648 28 69
St. Louis, MO ----- +1 314 409 4791

Teterboro, NJ ----- +1 201 288 1800

JETCRAFT
CORPORATION

2007 GULFSTREAM G450 SERIAL NUMBER: 4088

Lavatory Detail



Aft Galley



Vanity Detail

Specifications are subject to verification by purchaser. Aircraft is subject to prior sale, and/or removal from the market without prior notice.

(HQ) Raleigh +1 919-941-8400 info@jetcraft.com www.jetcraft.com

Basel, CH ----- +41 58 158 4958
Dubai, UAE ----- +971 4 324 3327

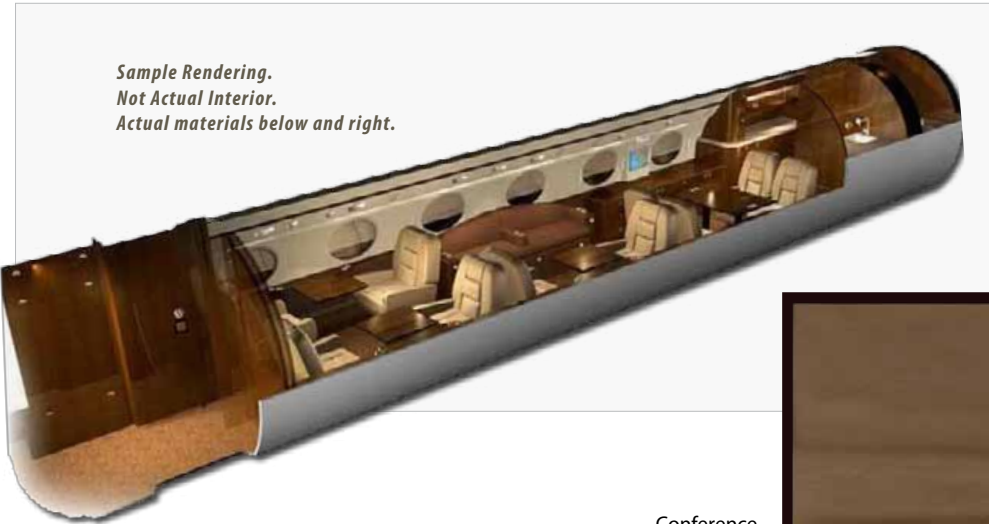
Hong Kong ----- +852 2868 6807
Mpls, MN ----- +1 612 238 3870

Moscow, Russia --- +7 495 648 28 69
St. Louis, MO ----- +1 314 409 4791

Teterboro, NJ ----- +1 201 288 1800

JETCRAFT
CORPORATION

2007 GULFSTREAM G450 SERIAL NUMBER: 4088



Sample Rendering.
Not Actual Interior.
Actual materials below and right.



Cabin Plating

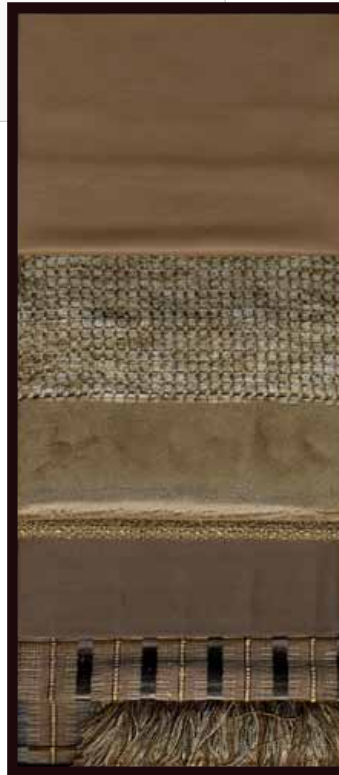


Countertops



Wood Sample

- Conference Group
- Divan
- Pillows
- Pillow Accent
- Pillow Welt Cord
- Pillows
- Pillow Accent
- Pillow Fringe



Headliner/PSU

Window Panel

Lavoratory Cushion
Dado Accent

Dado

All Seats

Specifications are subject to verification by purchaser. Aircraft is subject to prior sale, and/or removal from the market without prior notice.

(HQ) Raleigh +1 919-941-8400 info@jetcraft.com www.jetcraft.com

Basel, CH ----- +41 58 158 4958 Hong Kong ----- +852 2868 6807 Moscow, Russia --- +7 495 648 28 69 Teterboro, NJ ---- +1 201 288 1800
Dubai, UAE ----- +971 4 324 3327 Mpls, MN ----- +1 612 238 3870 St. Louis, MO ----- +1 314 409 4791



2007 GULFSTREAM G450 SERIAL NUMBER: 4088

Avionics Suite



Specifications are subject to verification by purchaser. Aircraft is subject to prior sale, and/or removal from the market without prior notice.

(HQ) Raleigh +1 919-941-8400 info@jetcraft.com www.jetcraft.com

Basel, CH ----- +41 58 158 4958
Dubai, UAE ----- +971 4 324 3327

Hong Kong ----- +852 2868 6807
Mpls, MN ----- +1 612 238 3870

Moscow, Russia --- +7 495 648 28 69
St. Louis, MO ----- +1 314 409 4791

Teterboro, NJ ----- +1 201 288 1800

JETCRAFT
CORPORATION

AIRCRAFT ACQUISITIONS, SALES AND TRADES

AIRBUS BOEING BOMBARDIER CESSNA DASSAULT EMBRAER GULFSTREAM HAWKER LEARJET

Whether you're looking to buy an aircraft or sell one, Jetcraft will put five decades of experience to work making it happen. Flawlessly. Because when you turn to us, you're tapping into an international team of specialists that consistently transform complex challenges into solutions. We build our entire approach around you, leveraging our market expertise and extensive industry partnerships to guarantee you'll always get the best advice — and the best deals. So give us a call. And leave doubt on the tarmac.



(HQ) Raleigh +1 919-941-8400 info@jetcraft.com www.jetcraft.com

Basel, CH ----- +41 58 158 4958 Hong Kong ----- +852 2868 6807 Moscow, Russia --- +7 495 648 28 69 Teterboro, NJ ---- +1 201 288 1800
Dubai, UAE ----- + 971 4 324 3327 Mpls, MN ----- +1 612 238 3870 St. Louis, MO ----- +1 314 409 4791

JETCRAFT
CORPORATION