

2010 GULFSTREAM G550

SERIAL NUMBER: 5265



Jetcraft Corporation

North America | Latin America | Europe | Africa | Middle East | Russia | Asia-Pacific
(HQ) Tel. +1 919 941 8400 | Fax +1 919 941 8406 | www.jetcraft.com | info@jetcraft.com



2010 GULFSTREAM G550

SERIAL NUMBER: 5265

HIGHLIGHTS

- Was flown privately since entering service and was consistently parked in a hangar.
- Gulfstream Planeview Avionics Cert Foxtrot.
- The aircraft has completed the Gulfstream Premium package ARCS in **March 2015** including:
 - Aircraft Records and Condition
 - ARCS Test Flight
 - Engine & APU Borescope
 - Nose and Main Landing Gear and Components – Detailed Inspection
 - Main Landing Gear Brakes – Teardown / Inspection
 - 500 Hour / 1A Inspection
 - 12 month / 1C Inspection
 - 1000 hour / 2A Inspection

AIRFRAME

Total Time Since New	1,362.3 Hours (Sept 30th 2015)
Total Landings Since New	600 Cycles
Airworthiness Date	12 January 2010
Home Base	Barbados
Maintenance Tracking	CMP
Certification	FAR 91

ENGINES

	Left Engine	Right Engine
Description	Rolls-Royce BR700-710C4-11	
Serial Number(s)	15643	15642
Total Hours Since New	1,362.3 Hours	1,362.3 Hours
Total Cycles Since New	600 Cycles	600 Cycles
HSI Due/Overhaul Due	4,000 Hours Hard Time	
Program Coverage	Rolls-Royce CorporateCare	

APU

Description	Honeywell RE220 (G550)
Serial Number	P-597
APU Total Time Since New	1110 Hours
Program Coverage	Honeywell MSP

MAJOR INSPECTION STATUS

Inspection	Last Performed	Next Due
24mo	June 2014	May 2016
36mo	May 2013	May 2016
48mo	June 2014	May 2018

Specifications and/or descriptions are provided as introductory information only and do not constitute representations or warranties. Verification of specifications remain the sole responsibility of purchaser. Aircraft is subject to prior sale, lease, and/or removal from the market without prior notice.

Jetcraft Corporation

North America | Latin America | Europe | Africa | Middle East | Russia | Asia-Pacific
(HQ)Tel. +1 919 941 8400 | Fax +1 919 941 8406 | www.jetcraft.com | info@jetcraft.com



2010 GULFSTREAM G550

SERIAL NUMBER: 5265

AVIONICS

The Gulfstream G550 is equipped with an integrated, Honeywell Primus Epic PlaneView avionics suite. A general summary of this aircraft's next generation avionics suite is as follows (Items in bold indicate optional/added equipment):

Type of Unit	Quantity	Description
EFIS (Electronic Flight Instrument System)	Quad	14" PFD and MFD LCD Screens
FMS (Flight Management System)	Triple	Honeywell MC-850
IRS (Inertial Reference System)	Triple	Honeywell Laseref V
GPS (Global Positioning System)	Dual	24 Channel Honeywell CMA-4024
DMU (Data Management Unit)	Single	Honeywell
ADM (Air Data Modules)	Triple	Honeywell HG1153CA
NAV (Navigation Radio)	Dual	Honeywell NV-875A
DME (Distance Measuring Equipment)	Dual	Honeywell DM-855
EVS (Enhanced Vision System)	Single	Honeywell
HUD (Head Up Display)	Single	Honeywell Visual Guidance System
ADF (Automatic Direction Finder)	Dual	Honeywell DF-855
AFCS (Auto Flight Control System)	Single	Autothrottle
A/P (Autopilot)	Dual	Automatic Flight Guidance System
AUDIO		
VHF COM (Very High Freq. Communication)	Triple	Honeywell TR-865A
HF COM (High Freq. Communications)	Dual	Collins HF-9034A
SATCOM (Satellite Communications)	Single	Aero H+ SATCOM
RADAR	Single	Color Weather Radar
RAD ALT (Radio Altimeter)	Dual	Honeywell
XPDR (Transponder)	Dual	Honeywell XS-857A with Mode S
ELT (Emergency Locator Transmitter)	Single	Triple Frequency ELT
GPWS (Ground Proximity Warning System)	Dual	Enhanced Units
TCAS (Traffic Collision Avoidance System)	Single	Honeywell TCAS 2000 w/Change 7.1
CVR (Cockpit Voice Recorder)	Single	Honeywell
FDR (Flight Data Recorder)	Single	Digital Flight Recorder with 25 hour capability

CONNECTIVITY

Type of Unit	Description
High Speed Internet	Honeywell High Speed Data
WiFi	Included
Satellite TV	Honeywell DirecTV with European and US coverage
In Flight Phone	Aircell Axxess Iridium Satellite Phone
Other Notable Features	Securaplane 5000

Specifications and/or descriptions are provided as introductory information only and do not constitute representations or warranties. Verification of specifications remain the sole responsibility of purchaser. Aircraft is subject to prior sale, lease, and/or removal from the market without prior notice.

Jetcraft Corporation

North America | Latin America | Europe | Africa | Middle East | Russia | Asia-Pacific
(HQ)Tel. +1 919 941 8400 | Fax +1 919 941 8406 | www.jetcraft.com | info@jetcraft.com



2010 GULFSTREAM G550

SERIAL NUMBER: 5265

ENTERTAINMENT

Type of Unit	Quantity	Description
Upgraded HD TV Monitor(s)	3	1-Forward Cabin 24", 1 Aft-Cabin 24", 1 Mid-Cabin 20"
Personal HD TV Monitors	4	Wall Mounted 7" Monitors at Single Seats

OTHER EQUIPMENT

Type of Unit	Description
Central Maintenance Computer	Single point of contact computer to connect to and download Maintenance Data

NAVIGATION & COMPLIANCE

RVSM	B-RNAV (RNP 5)
NAT MNPS	RNP 4
RNP 10	P-RNAV

WEIGHTS

Gross Weight (Ramp)	91,200 lbs	Max Zero Fuel Weight	50,100 lbs
Max Takeoff Weight	90,800 lbs	Empty Weight	46,812 lbs
Max Landing Weight	75,300 lbs	Current Basic Operating Weight	48,300 lbs

EXTERIOR

Base Paint Color	Matterhorn White
Belly Paint Color	Midnight Blue
Strip Color(s)	Las Vegas Gold Metallic and Wine Metallic
Last Painted Date	Original

Specifications and/or descriptions are provided as introductory information only and do not constitute representations or warranties. Verification of specifications remain the sole responsibility of purchaser. Aircraft is subject to prior sale, lease, and/or removal from the market without prior notice.

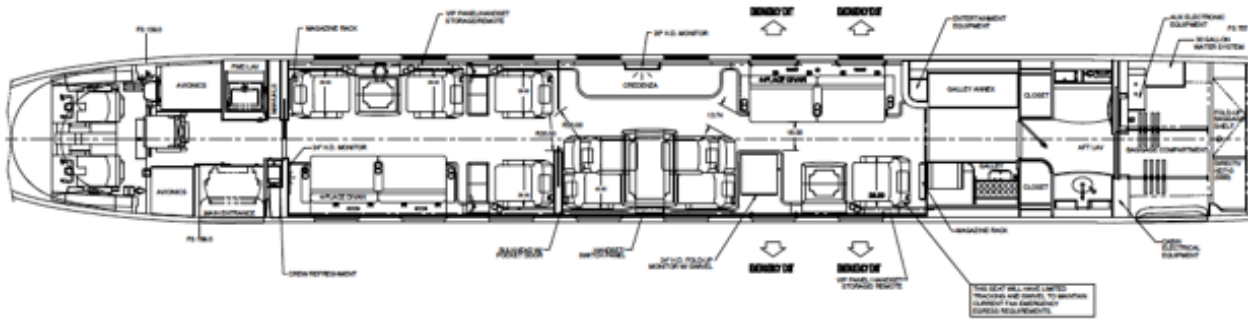
Jetcraft Corporation

North America | Latin America | Europe | Africa | Middle East | Russia | Asia-Pacific
(HQ)Tel. +1 919 941 8400 | Fax +1 919 941 8406 | www.jetcraft.com | info@jetcraft.com



2010 GULFSTREAM G550

SERIAL NUMBER: 5265



	Description
Number of Passengers	17 Passengers
Galley Location	Aft Cabin
Forward Cabin Configuration	2 Place Club Opp. 4 Place Divan followed by 2 Forward Facing Seats
Mid Cabin Configuration	Four (4) Place Conference Grouping Opp. Credenza
Aft Cabin Configuration	Four (4) Place Divan Opp. Executive/VIP Seat with Entertainment Cabinet
Lavatory Location(s)	Forward Crew Lavatory and Aft Cabin Lavatory
Crew Rest	N/A, Forward Crew Refreshment Area
Jumpseat	Yes
Other Notable Features	Electric Window Shades

Exterior - Profile



Specifications and/or descriptions are provided as introductory information only and do not constitute representations or warranties. Verification of specifications remain the sole responsibility of purchaser. Aircraft is subject to prior sale, lease, and/or removal from the market without prior notice.

Jetcraft Corporation

North America | Latin America | Europe | Africa | Middle East | Russia | Asia-Pacific
(HQ)Tel. +1 919 941 8400 | Fax +1 919 941 8406 | www.jetcraft.com | info@jetcraft.com



2010 GULFSTREAM G550

SERIAL NUMBER: 5265

Forward Cabin Facing Aft



Mid Cabin Facing Aft



Specifications and/or descriptions are provided as introductory information only and do not constitute representations or warranties. Verification of specifications remain the sole responsibility of purchaser. Aircraft is subject to prior sale, lease, and/or removal from the market without prior notice.

Jetcraft Corporation

North America | Latin America | Europe | Africa | Middle East | Russia | Asia-Pacific
(HQ)Tel. +1 919 941 8400 | Fax +1 919 941 8406 | www.jetcraft.com | info@jetcraft.com



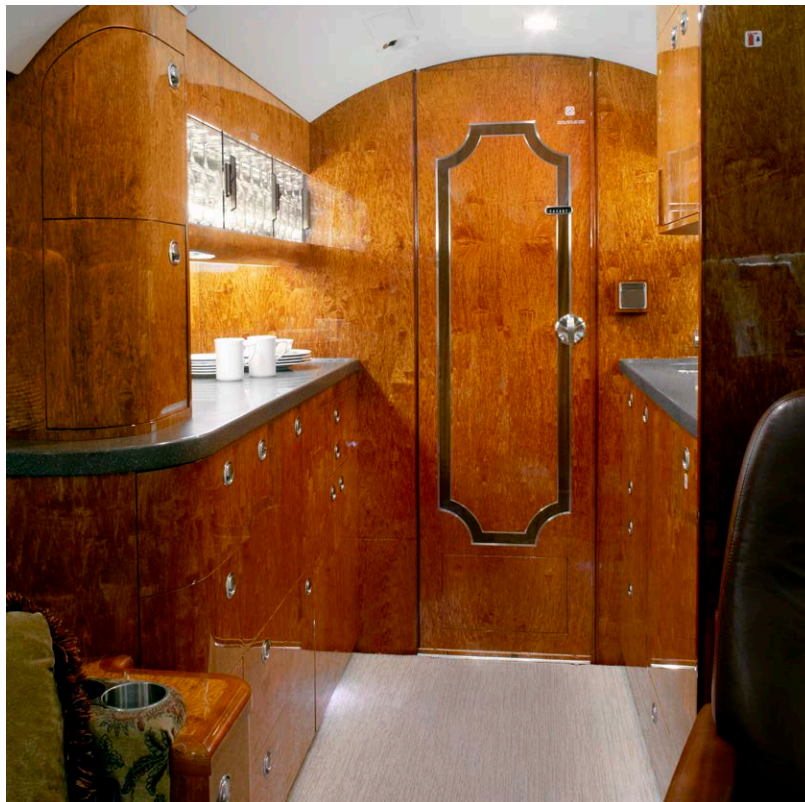
2010 GULFSTREAM G550

SERIAL NUMBER: 5265

Mid Cabin Facing Forward



Aft Galley



Specifications and/or descriptions are provided as introductory information only and do not constitute representations or warranties. Verification of specifications remain the sole responsibility of purchaser. Aircraft is subject to prior sale, lease, and/or removal from the market without prior notice.

Jetcraft Corporation

North America | Latin America | Europe | Africa | Middle East | Russia | Asia-Pacific
(HQ)Tel. +1 919 941 8400 | Fax +1 919 941 8406 | www.jetcraft.com | info@jetcraft.com



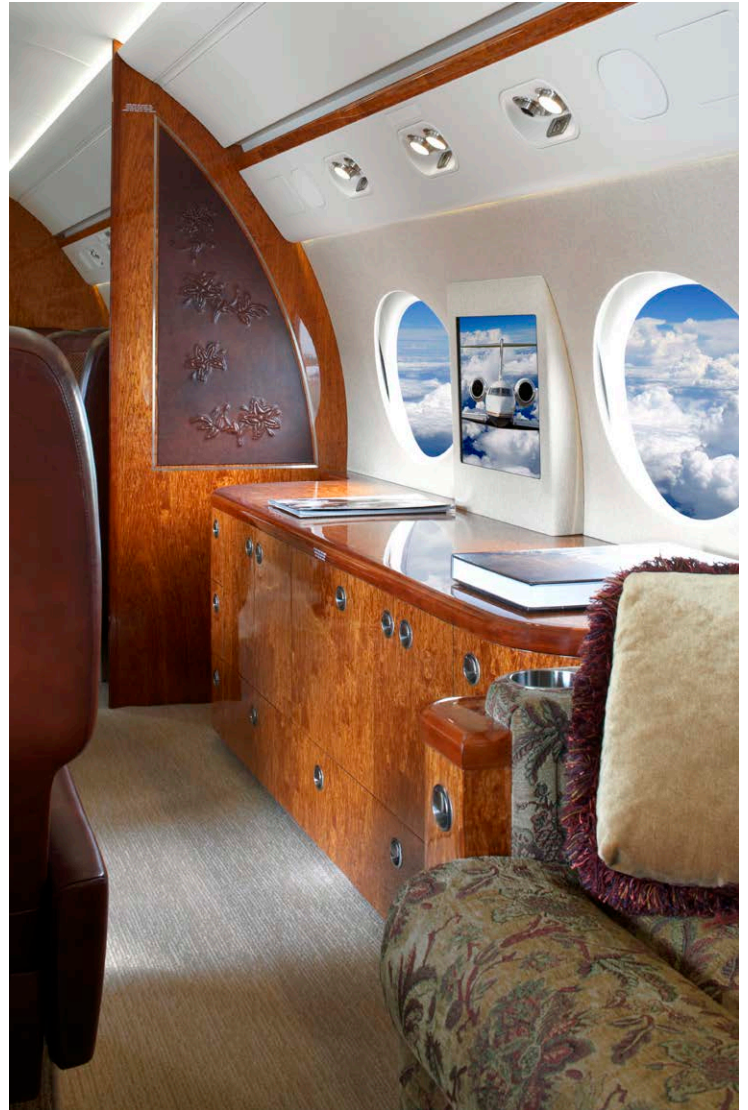
2010 GULFSTREAM G550

SERIAL NUMBER: 5265

Table and Monitor Detail



Mid Cabin Credenza



Specifications and/or descriptions are provided as introductory information only and do not constitute representations or warranties. Verification of specifications remain the sole responsibility of purchaser. Aircraft is subject to prior sale, lease, and/or removal from the market without prior notice.

Jetcraft Corporation

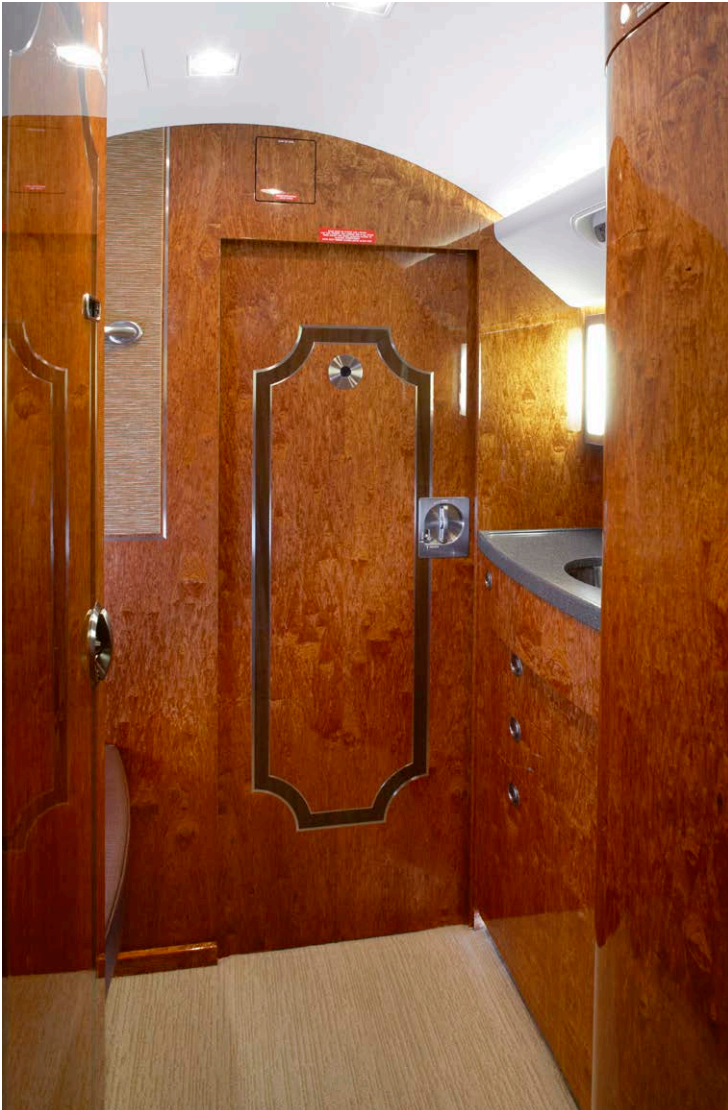
North America | Latin America | Europe | Africa | Middle East | Russia | Asia-Pacific
(HQ)Tel. +1 919 941 8400 | Fax +1 919 941 8406 | www.jetcraft.com | info@jetcraft.com



2010 GULFSTREAM G550

SERIAL NUMBER: 5265

Lavatory



Custom Cargo Shelf



Specifications and/or descriptions are provided as introductory information only and do not constitute representations or warranties. Verification of specifications remain the sole responsibility of purchaser. Aircraft is subject to prior sale, lease, and/or removal from the market without prior notice.

Jetcraft Corporation

North America | Latin America | Europe | Africa | Middle East | Russia | Asia-Pacific
(HQ) Tel. +1 919 941 8400 | Fax +1 919 941 8406 | www.jetcraft.com | info@jetcraft.com



2010 GULFSTREAM G550

SERIAL NUMBER: 5265

Avionics Suite



Exterior - Nose View



Specifications and/or descriptions are provided as introductory information only and do not constitute representations or warranties. Verification of specifications remain the sole responsibility of purchaser. Aircraft is subject to prior sale, lease, and/or removal from the market without prior notice.

Jetcraft Corporation

North America | Latin America | Europe | Africa | Middle East | Russia | Asia-Pacific
(HQ)Tel. +1 919 941 8400 | Fax +1 919 941 8406 | www.jetcraft.com | info@jetcraft.com



AIRCRAFT ACQUISITIONS, SALES AND TRADES

AIRBUS

BOEING

BOMBARDIER

CESSNA

DASSAULT

EMBRAER

GULFSTREAM

HAWKER

Whether you're looking to buy an aircraft or sell one, Jetcraft will put more than five decades of experience to work making it happen. Flawlessly. Because when you turn to us, you're tapping into an international team of specialists that consistently transform complex challenges into solutions. We build our entire approach around you, leveraging our market expertise and extensive industry partnerships to guarantee you'll always get the best advice – and the best deals. So give us a call. And leave doubt on the tarmac.

Jetcraft Corporation

North America | Latin America | Europe | Africa | Middle East | Russia | Asia-Pacific
(HQ)Tel. +1 919 941 8400 | Fax +1 919 941 8406 | www.jetcraft.com | info@jetcraft.com

